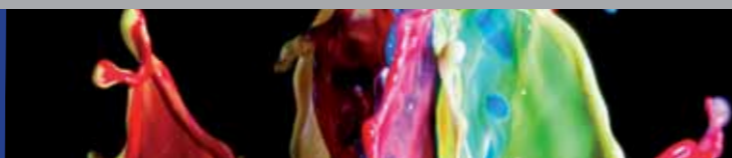


HARDFLEX



STRUCTURE

Type of flooring	EN 649 / EN ISO 10581 / EN 13533	Bi-homogeneous vinyl flooring
Type	EN 651	PVC floor coverings with cellular layer
Pattern		Solid / Granulate
Total thickness	EN 428 / EN ISO 24346	2.0 to 5.0 mm (4.0 and 5.0 mm E3 surface only)
Surface		Smooth (E1) - Matt (E2) - EasyClean (E3)
Sheets dimensions	EN 426 / EN ISO 24341	1.40 / 1.50 x 20 m
Tiles dimensions	EN 426 / EN ISO 24341	60.8 x 60.8 cm / 60.8 x 91.2 cm
Total weight	EN 430 / EN ISO 23997	3.0 to 7.2 Kg/m ²

SAFETY

Reaction to fire	EN 13501 - 1	Bfl-s1
Slip resistance	DIN 51130	R9
Dynamic coeff. of friction	EN 13893	DS (>0.30)
REACH Regulation	No. 1907/2006	Contains no SVHC substances
Indoor Air Quality	ISO 16000 - EN16516	T VOC after 28 day < 10 mg/m ³

PERFORMANCE

Impact sound reduction	ISO 717-2	11 dB (4.0 mm) - 13 dB (5.0 mm)
Residual indentation	EN 433 / EN ISO 24343	ca. 0.04 mm
Hardness	DIN 53 505	94 shore A
Wear resistance	EN 660-2	Group T
Density	EN 436	1.373 g/cm ²
Colour fastness	ISO 105-B02	≥ rating 7
Static electrical charge	EN 1815	1.2 kV (Antistatic version)
Resistance vs chemicals	EN 423 / EN ISO 26987	Good against acid and diluted alkalis
Resistance vs microorganism		Yes
Classification	Intensive Commercial Traffic Light Industrial Use (equal to Class 34/43)	

Prolonged contact with vulcanized rubber (tyres, appliances and furniture supports, etc.) may leave indelible brown marks.

It is the responsibility of the purchaser to determine the suitability of the materials and of the subfloor conditions for the intended use.

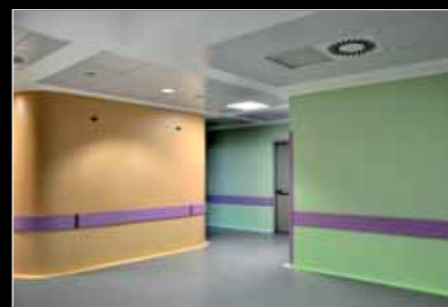
All raw materials used for "preparation" are purchase by Sogega from qualified suppliers and in compliance with REACH regulation.



STRENGTH AND FLEXIBILITY

HARDFLEX

HIGH PERFORMANCE VINYL FLOORING



HARDFLEX



APPLICATION

Hardflex is a heavy duty flooring particularly suitable for high traffic areas such as: offices, hospitals, schools, shops and department stores, leisure centres, public buildings and in every place where heavy foot traffic is expected.

INSTALLATION

Keep Hardflex stored loosely for 24 hours at a min. temperature of 18°C prior to installation. Subfloor should be clean, dry smooth and free of imperfections

Color match is subject to commercial tolerances. Claims for colour match or any other visible material defects or damages are not accepted after installation.

INITIAL MAINTENANCE

The floor should be vacuum cleaned and any marks left during installation removed. Grease can be removed with a neutral dilute detergent. When the floor is dry apply two or three layers of a top quality acrylic wax recommended for vinyl products.

REGULAR MAINTENANCE

Vacuum clean the floor as often as necessary to remove dust and solid dirt. Clean the floor with a wet mop using a neutral dilute detergent to remove grease and stains.

PERIODIC MAINTENANCE

Using only best quality products remove any build-up of polish with a wax remover and wash the floor with water until it is completely clean. When the floor is dry apply one or two layers of top quality acrylic wax recommended for vinyl products.

