



WOOD SP & CONCRETE SP
Luxury Vinyl Flooring



LIFETIME GUARANTEE

Garantie à vie | Garantie de por vida
Doživotní záruka | Levenslange Garantie
Lebenslange Garantie | Garanzia á vita
Gwarancja na całe życie | Livstidsgaranti



SCRATCH PROOF

Resistant aux rayures
Prueba de desl. zamiento
Odo nost. j. o. i. p. š. k. a. n. i. | Krasbeskennig
Kratzfest | A prova di graffio
Dowód skrzyżki | Ripesi sker



ADVANCED STABILITY

Toute stabilité | Estabilidad avanzada
Vetši stabiilita | Geavanceerde Stabiliteit
Erwehlente Stabilität | Stabilität avanzata
Zaszwansowana stabilność
Avancerd Stabilitet



PET FRIENDLY

Resistant aux animaux | Mascota amigable
Préférable à domicile | Inmazidum
Huisdiervriendelijk
Tausierfreundlich | Cucciolo amichevole
Przyjazny zwierzęcom | Kjeledyrvennlig



WATERPROOF

Imperméable | Impermeable
Vodoodolnost | Waterbestendig
Wasserdicht | Impermeabile
Wodoodporny | Vannett



REUSABLE

Réutilisable | Reutilizable
Znovu použitelný | Herbruikbaar
Wiederverwendbar | Riutilizzabile
Wielokrotnego użytku | Gjorbruk



SOUND ABSORPTION

Absorption sonore | Absorción de sonido
Absorpcje zvuku | Gelütsabsorption
Schallabsorption | Assorbimento del suono
Pochłanianie dźwięku | Lyd absorbtion



ANTIBACTERIAL

Antibactérien | Antibacteriano
Antibakteriální | Antibacteriële
Antibakteriële | Antibakteriële
Przeciwbakteryjny | Antibakteriell



LIGHT & HEAT STABILITY

Stabilité à la lumière, à la chaleur
Estabilidad de luz y calor
Oculhos, vadi sveltu a teplu
Licht- und warmtestabilität
Licht- und warmestabilität
Luce e riscaldamento del calore
Stabilność światła i ciepła | Lys og varmestabilitet



EFFICIENT INSTALLATION

Installation rapide | Instalación eficiente
Rychlá instalace | Efficiente installatie
Effiziente Installation | Instalazione efficiente
Wycajna instalacja | Effektiv installasjon



MOULD & MILDEW RESISTANT

Resistant aux moisissures
Resistente al moho y los hongos
Oculhos, vadi plisnim | Mold & mildewbestandig
Mold & mildew bestandig
Stampo e resistent del massimo
Oświeczacz mold & mildew | Mugg og muggfast







Col. S005





Col. S064



Col. S065





Col. S067



Col. S063





Col. S034



Col. S062





Col. S035

500000



Col. S071





Col. S070



Col. S069





Col. S068



Col. S064



Col. S066



Col. S034



Col. S036

PLANKS



Col. S067



Col. S065



Col. S063



Col. S062



Col. S005



Col. S068



Col. S070

TILES



Col. S035

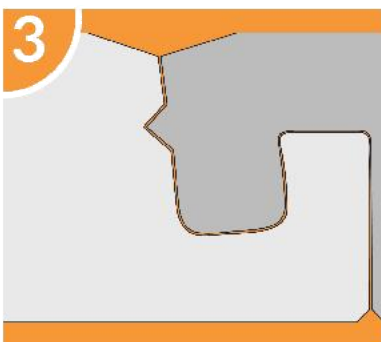
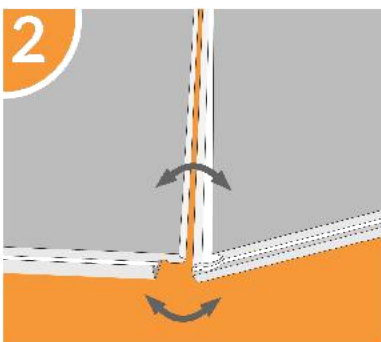
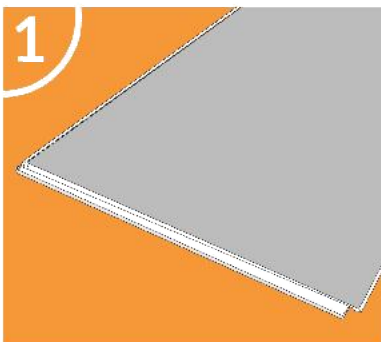


Col. S069



Col. S071

Our **interlocking flooring** system makes installation as easy as 1 2 3. Simply line up your flooring, click together and lay it down.





UV coating

Wear Layer

Film decor

Rigid
solid
core

Drop lock

Acoustic
insulation
layer

SPECIFICATION

Plank: 1220mm x 181mm

Tile: 940mm x 465mm

5 mm total gauge

0.55 mm wear layer

1 mm IXPE acoustic insulation layer

Angle/Drop lock

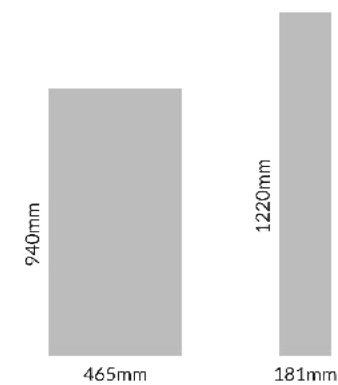
4 sided micro bevel

PU-coating

Bevelled edge

100% recyclable

PER CARTON 12 Planks 2.65m²
7 Tiles 3.06m²



Specifications

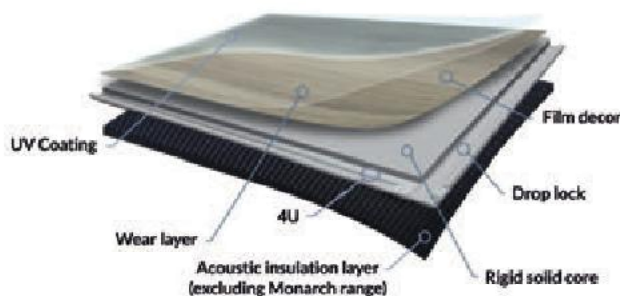
	STANDARD	WOOD SP	CONCRETE SP
STANDARDS	ISO/DIS19322.2:2016 EN649	Heterogeneous PVC	Heterogeneous PVC
CLASSIFICATION	ISO 10874 EN 685	33: Heavy Commercial 23: Domestic heavy	33: Heavy Commercial 23: Domestic heavy
TILE DIMENSIONS	EN 426	1220 X 181 mm	940 X 465 mm
TOTAL THICKNESS	EN 428	5 mm	5 mm
WEAR LAYER		0.55 mm	0.55 mm
SURFACE		Wood	Cement/Concrete
WEIGHT	EN 430	8 Kg/sqm	8 Kg/sqm
INFLAMMABILITY	EN 13501-1	Bfl-s1	Bfl-s1
STAINING RESISTANCE	EN ISO 26987:2012	Class 0	Class 0
COLOUR FASTNESS	EN ISO 105-B02	Grade 6	Grade 6
FUNGI RESISTANCE	ISO846	Growth intensity 0	Growth intensity 0
DIMENSIONAL STABILITY	EN ISO 23999	≤0.15%	≤0.15%
ACOUSTIC INSULATION	EN ISO 10140-3 ISO717-2	Δ Lw 20DB	Δ Lw 20DB
RESIDUAL INDENTATION	EN 433	< 0.1mm	< 0.1mm
CASTOR CHAIR	ISO 4918 EN 425:2002	PASS	PASS
FORMALDEHYDE EMISSION	EN14041:2004	Class E1	Class E1
SLIP RESISTANCE	EN 13893 DIN 51130	DS R10	DS R10
ELECTROSTATIC BEHAVIOUR	EN1815	PASS	PASS
REACH	EC No 1907/2006	PASS	PASS
VOC EMISSION	France VOC regulation	A+	A+



La Commissione europea ha stabilito norme per la classificazione dell'efficienza energetica dei prodotti. I prodotti sono classificati in base al loro consumo energetico. La classificazione è basata su dati tecnici e su dati di campo. La classificazione è basata su dati tecnici e su dati di campo. La classificazione è basata su dati tecnici e su dati di campo.



abZ Z-166.010-1695





**Combining
innovative technology,
superior quality
and creative design
in all our products.**

