

INFINITE POSSIBILITIES

EASYTILE

FREE-LAYING SELF-LOCKING
PVC TILES. CAN ALSO BE
CHEMICALLY WELDED

RECYCLABLE AND
ENVIRONMENTALLY
FRIENDLY

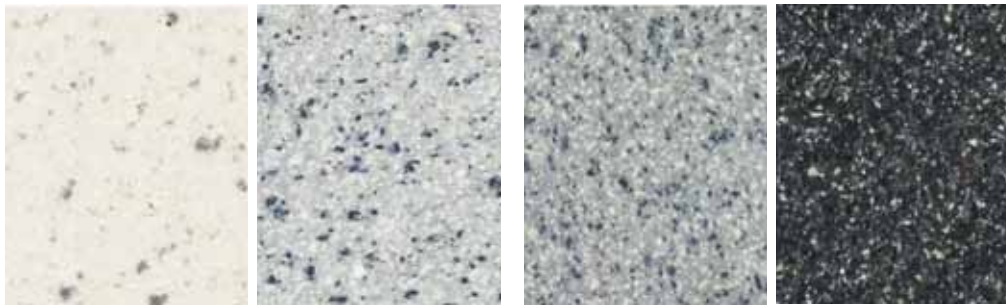


SOGEAR

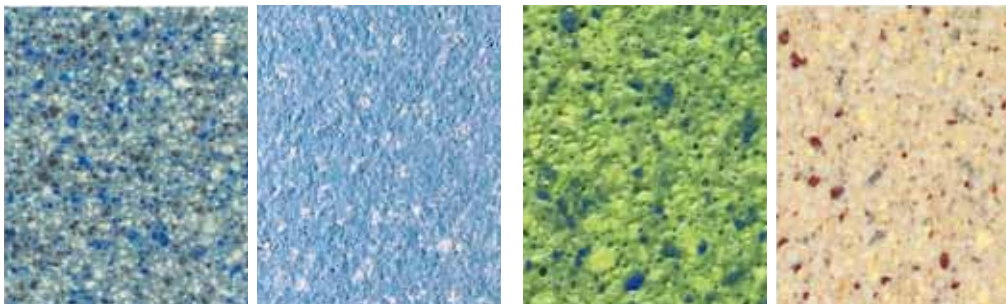
MADE IN ITALY

THE NATURE OF PLASTICS

EASYTILE



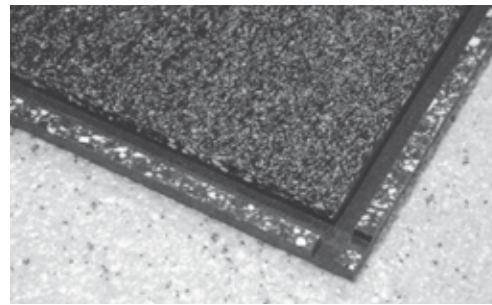
811 **401** **400** **404**



406 **2004** **2002** **816**



2009



Art. 2091

The wear layer is made of an excellent blend of rigid PVC, bonded by thermic fusion to a sub layer of plastified PVC which acts as a base.

Loose laying, extremely safe and simple to install.

It is suggested to leave roughly 1cm of space between tiles and walls. If necessary it is possible to chemically seam the tiles.

Thickness: 7.5 mm

Weight: 11,2 kg/sq.m

Tile size: 50x50 cm

Packages: 8 tiles, equaling 2 sq. m

All raw materials are purchased by Sogega from qualified suppliers and in compliance with REACH regulation.

Further, as adhesive is not used to fix tiles, forklifts and carts are not recommended. Beyond 50 sq. meters the use of expansion joints is mandatory. Installation should be carried at least at 18°C. This temperature should be maintained for 24 hours before and after installation.

Reaction to fire	EN 13501 - 1	Bfl-s1
Slip resistance	DIN 51130	R9
Dynamic coeff. of friction	EN 13893	DS (→0.30)
REACH Regulation	No. 1907/2006	Contains no SVHC substance
Indoor Air Quality	ISO 16000 - EN16516	T VOC after 28 day < 10 mg/m ³
Residual indentation	EN 433 / EN ISO 24343	ca. 0.04 mm
Hardness	DIN 53 505	94 shore A
Wear resistance	EN 660-2	Group T
Colour fastness	ISO 105-B02	> rating 7
Static electrical charge	EN 1815	1.2 kV (Antistatic version)
Resistance vs chemicals	EN 423 / EN ISO 26987	Good against acid and diluted alkalis
Resistance vs microorganism		Yes
Classification	Intensive Commercial Traffic Light Industrial Use (equal to Class 34/43)	

As for all vinyl flooring, prolonged contact with tires or other rubber objects can cause indelible brown marks.



RICICLABILE
BASSO IMPATTO
AMBIENTALE



GREEN BUILDING



Information sur le niveau d'émission de substances volatiles dans l'air intérieur, présentant un risque de toxicité par inhalation, sur une échelle de classe allant de A+ (très faibles émissions) à C (fortes émissions)



Compliant



Sistema Qualità cert. N.782
Norma UNI EN ISO 9001